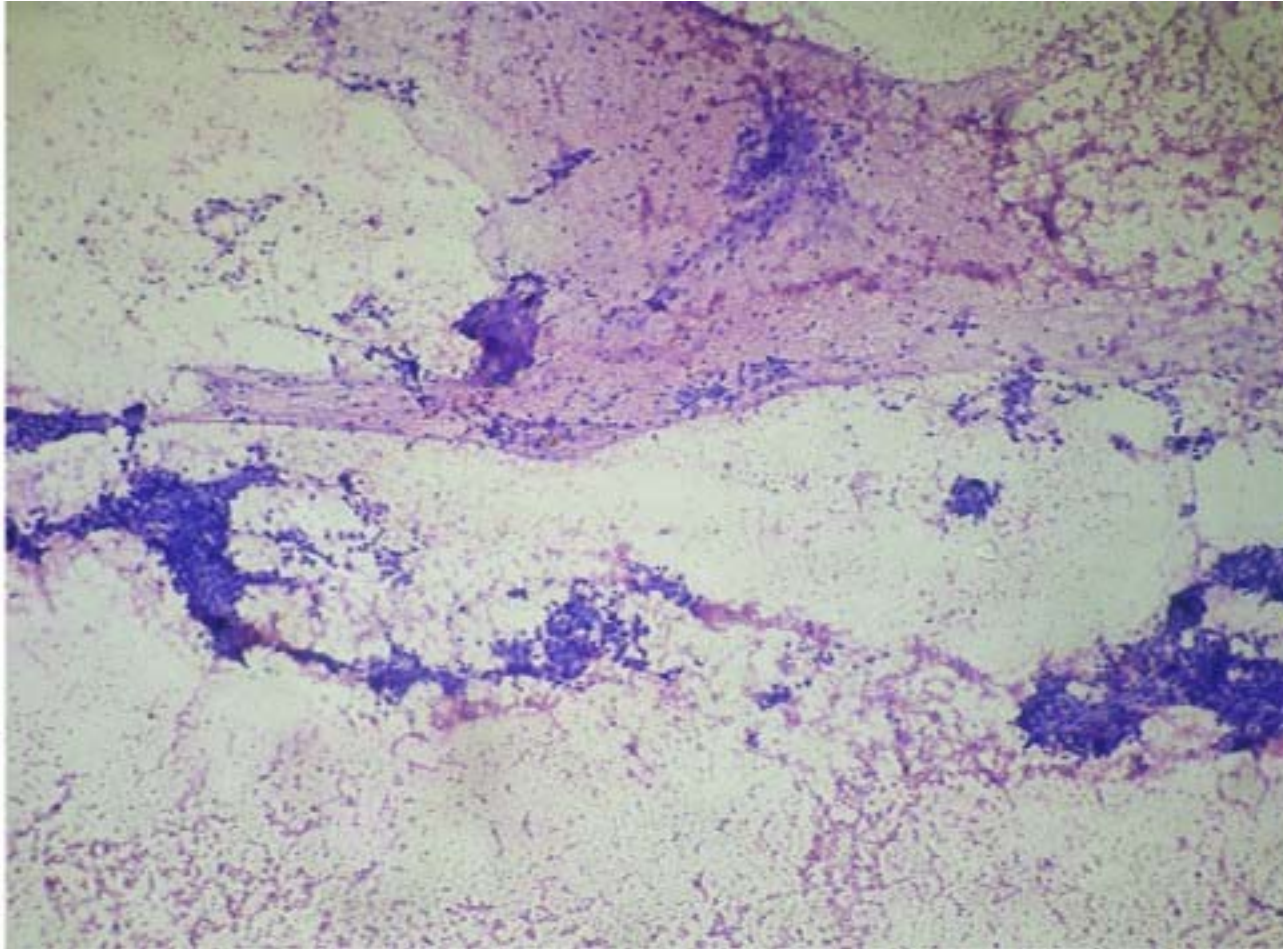


Case 2

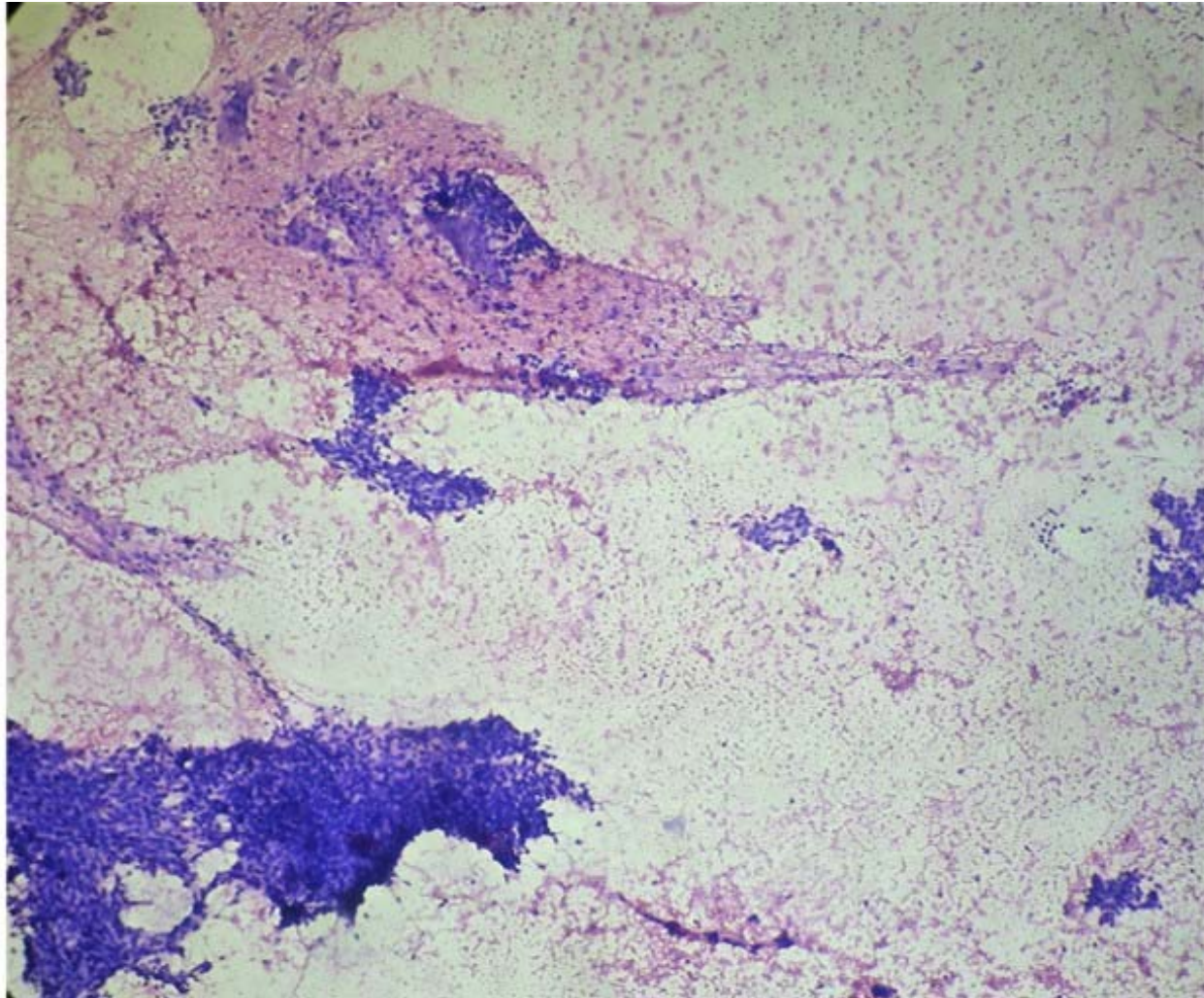
History

- Five unstained smears from left parotid mass were received
- Thirteen year-old female with mass in front of left ear(parotid region) since 6 to 8 months
- Slowly enlarging and painless
- No history of trauma, fever or weight loss
- USG: left parotid mass
 - No cervical lymphadenopathy

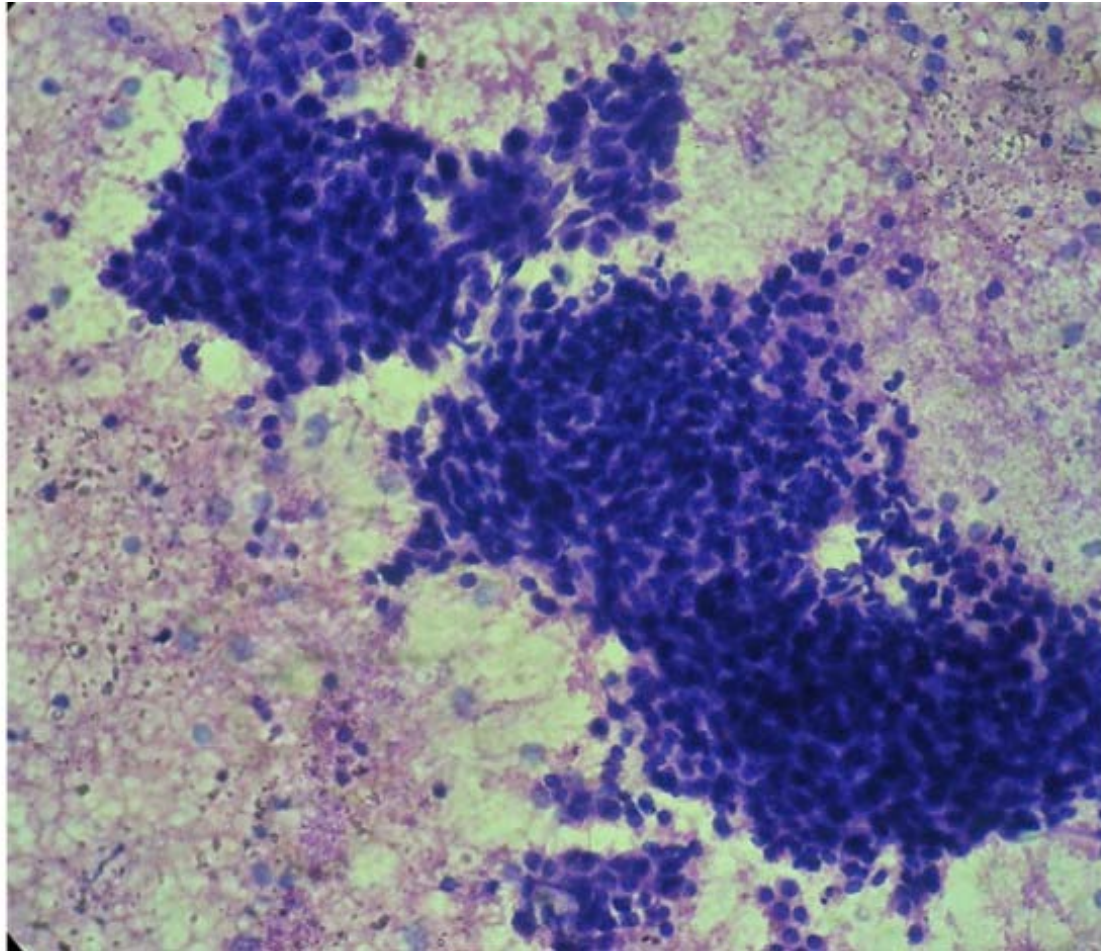
FNAC



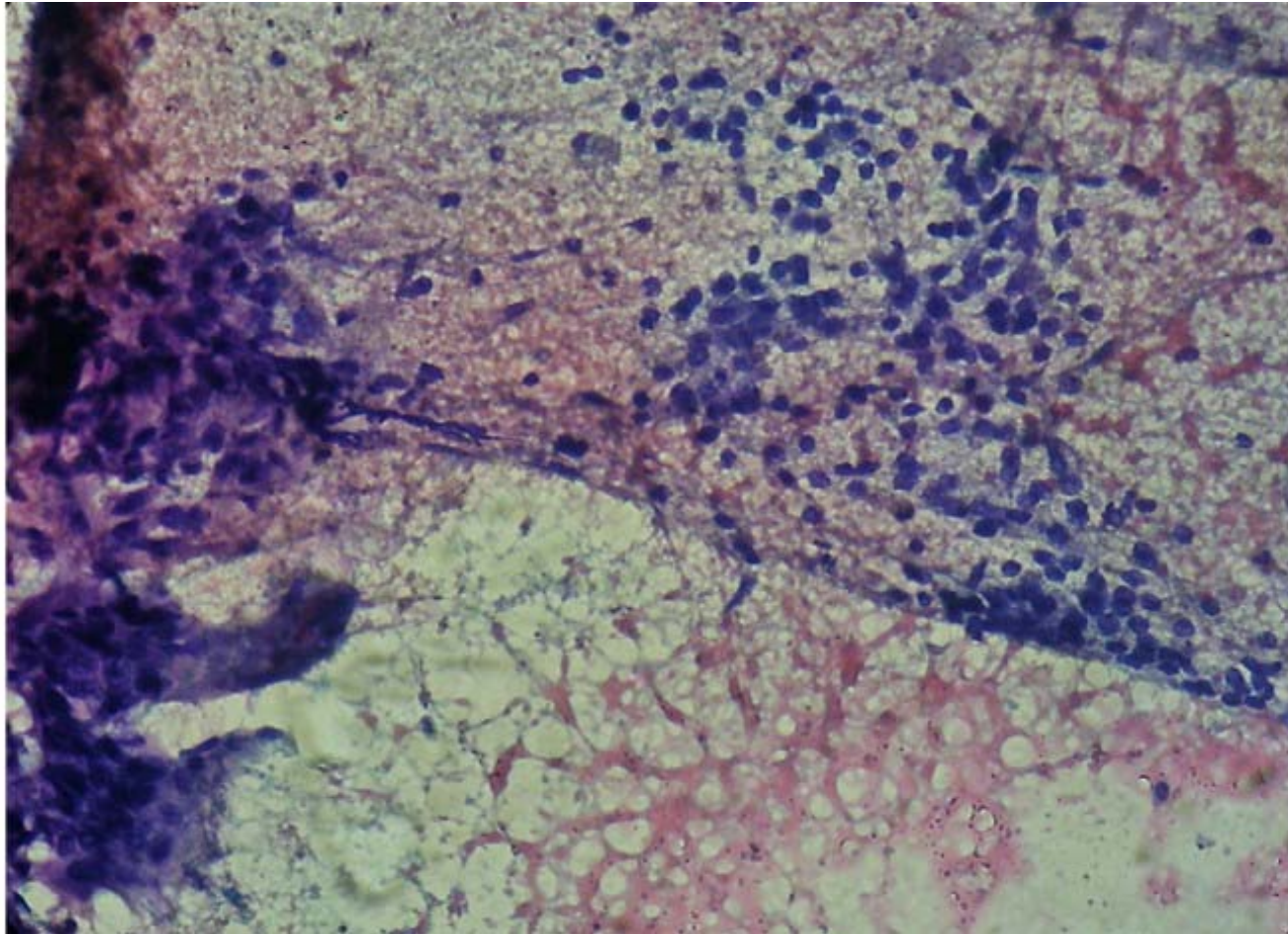
FNAC



FNAC



FNAC



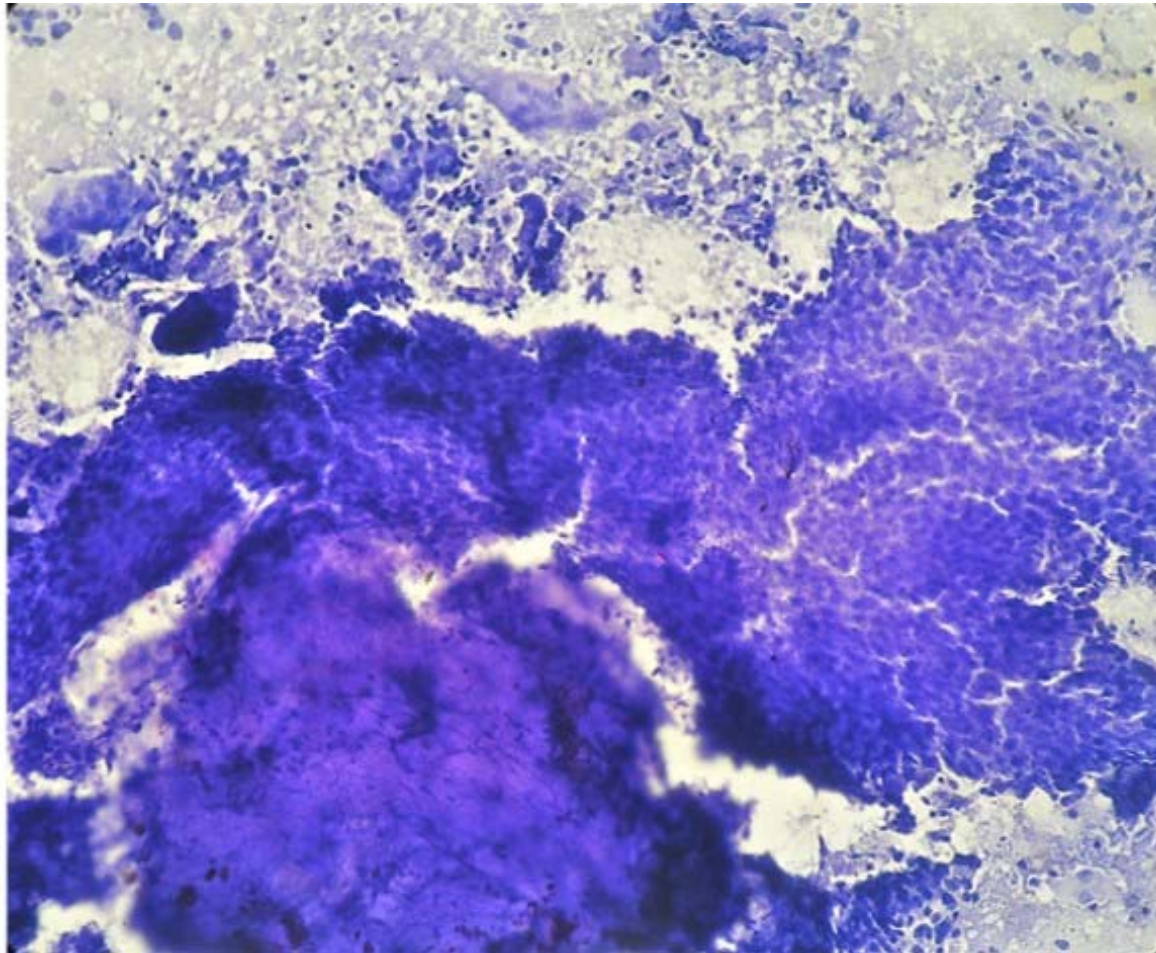
FNAC

- Isolated, clusters and irregular sheets of basaloid cells with scanty cytoplasm and indistinct cell borders
- Amidst these are seen larger cells with granular or pale acidophilic cytoplasm and occasional multinucleate giant cells

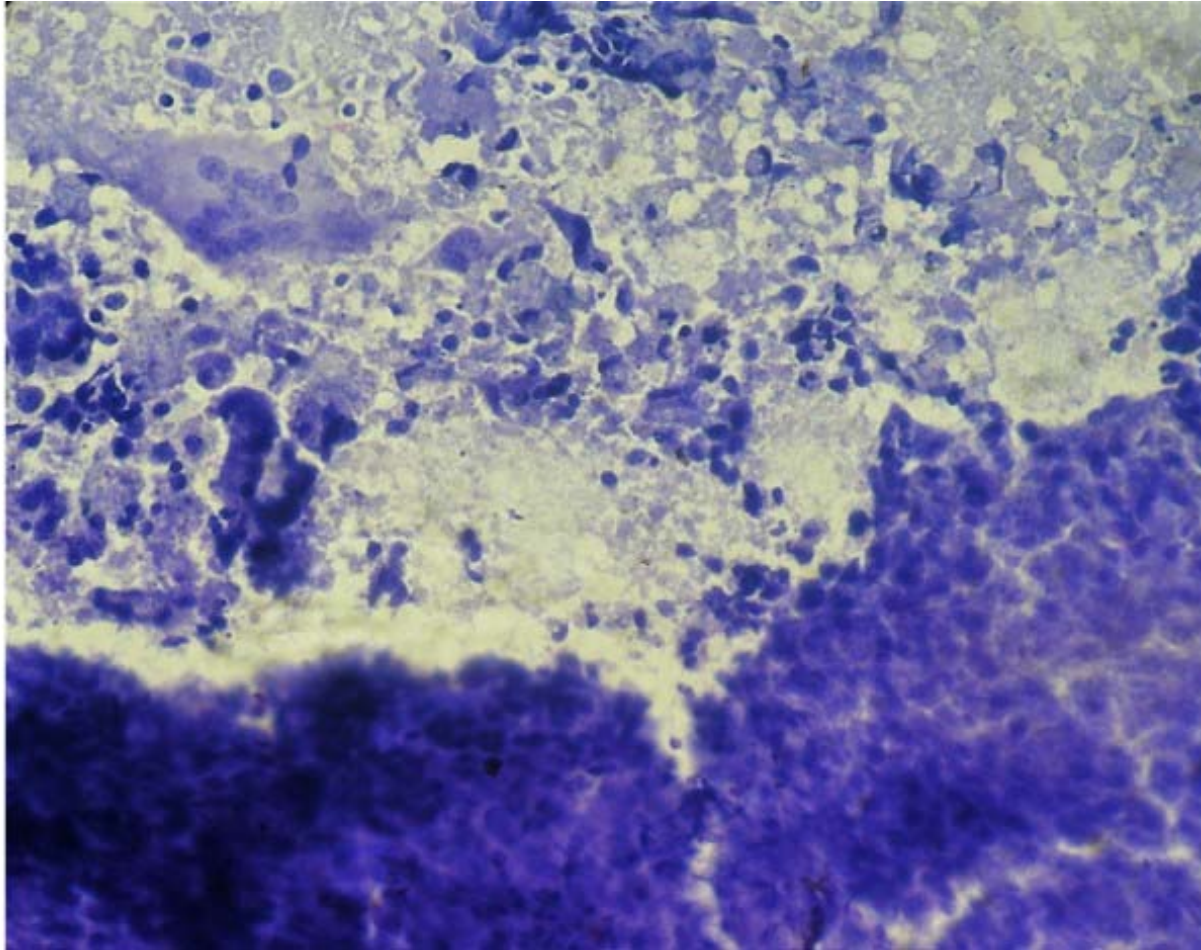
FNAC

- Neoplasm of probable salivary gland origin
- An intra-operative frozen section was advised

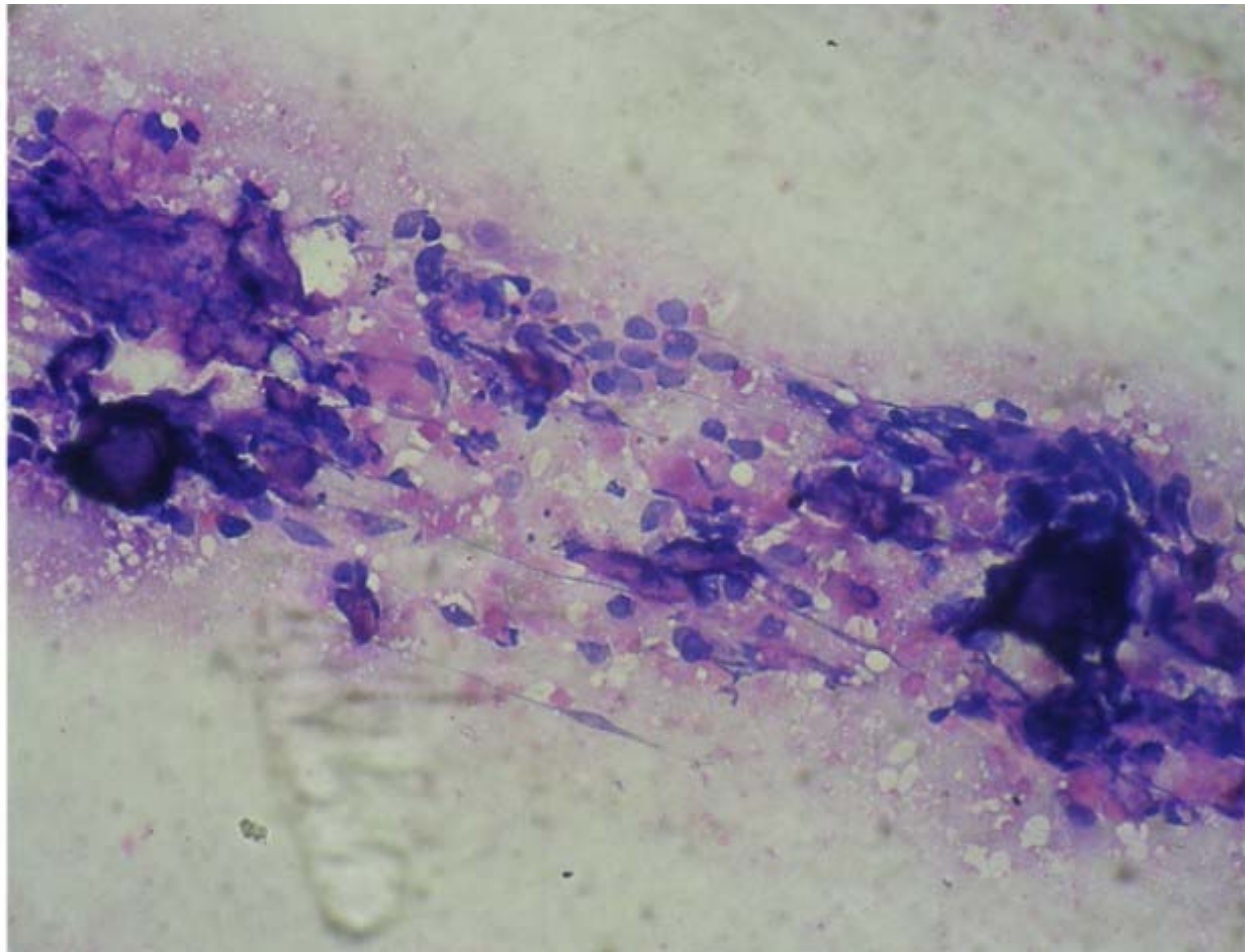
Imprint Smears



Imprint Smears



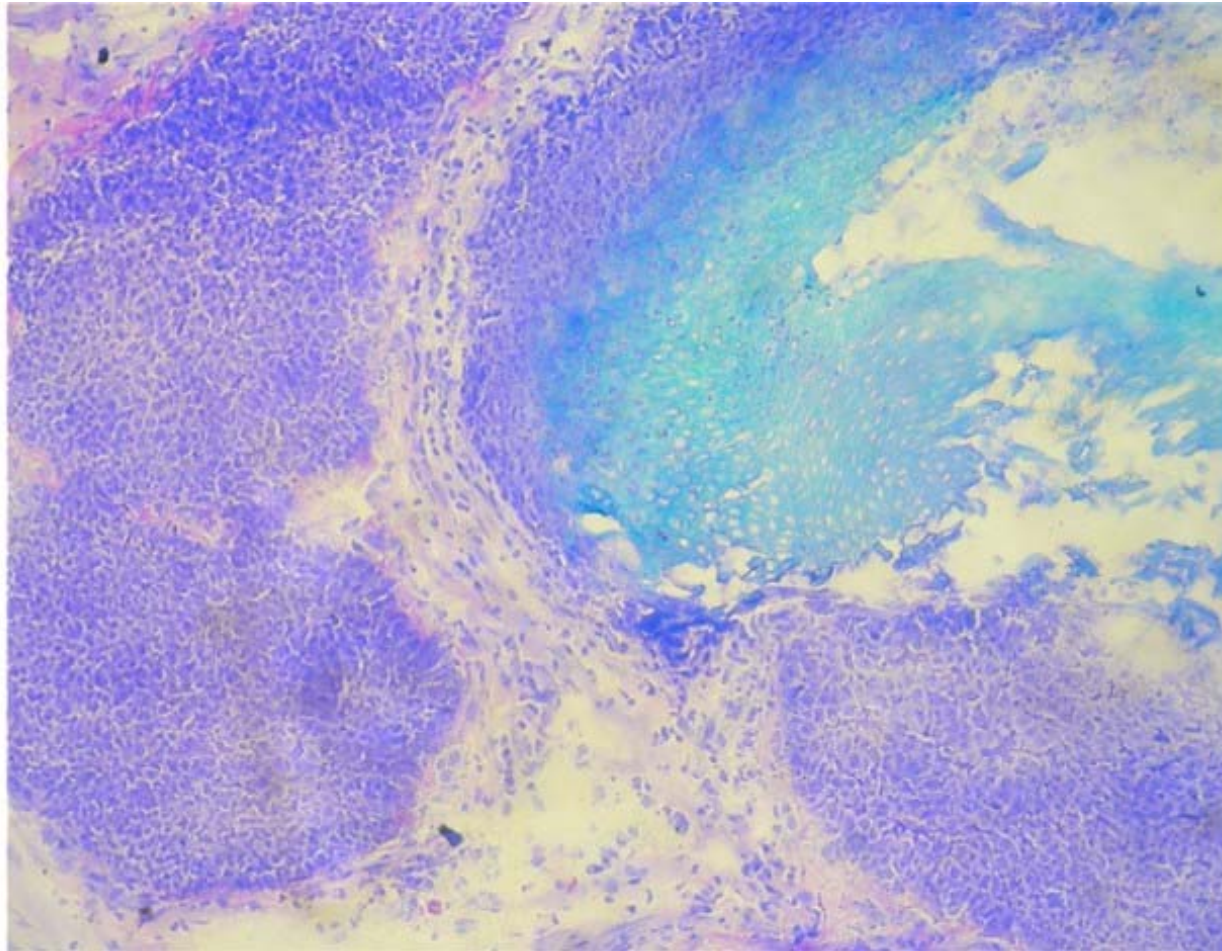
Imprint Smears



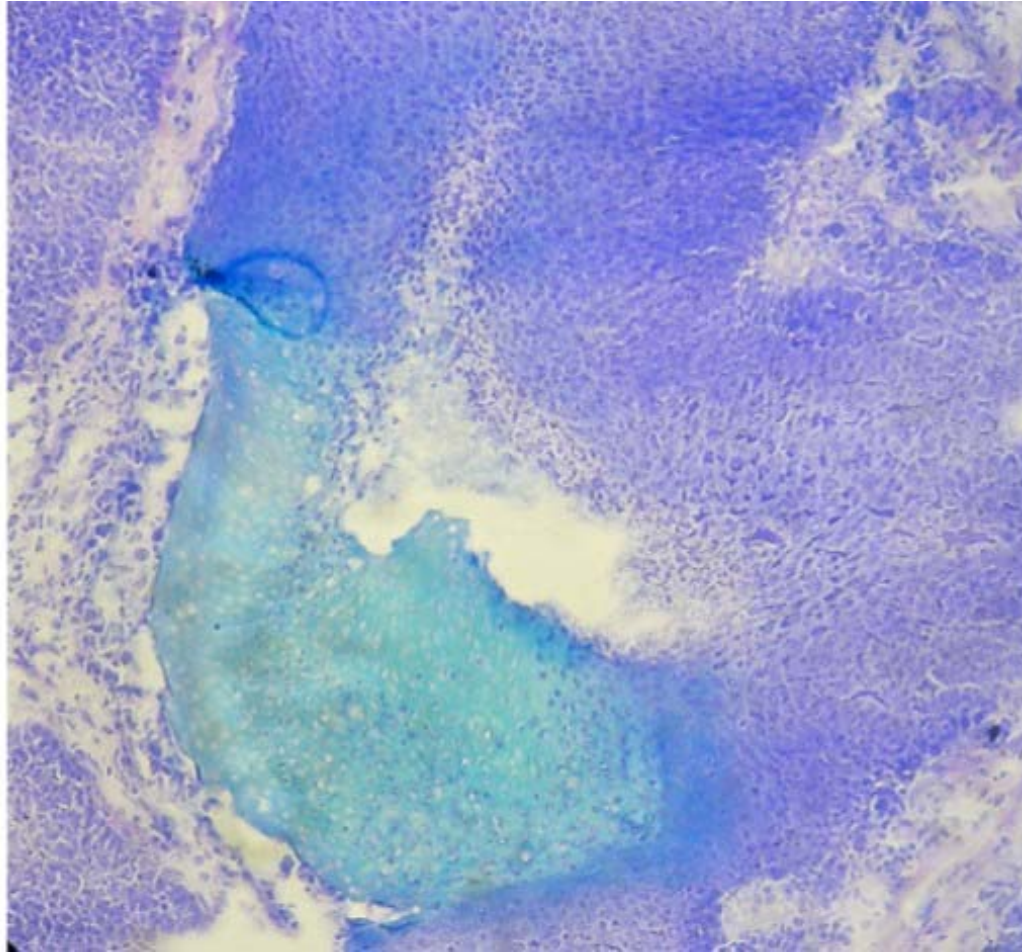
Gross Examination



Frozen sections



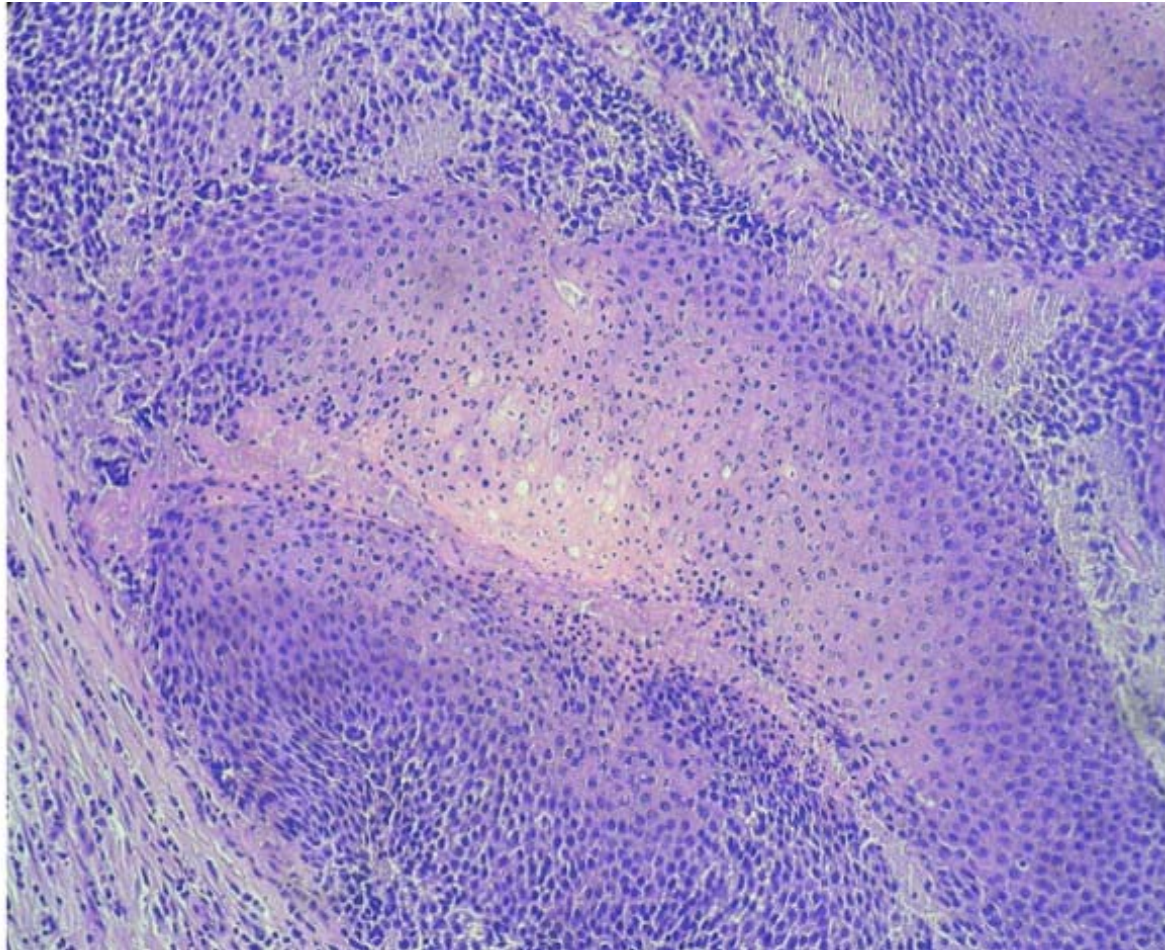
Frozen sections



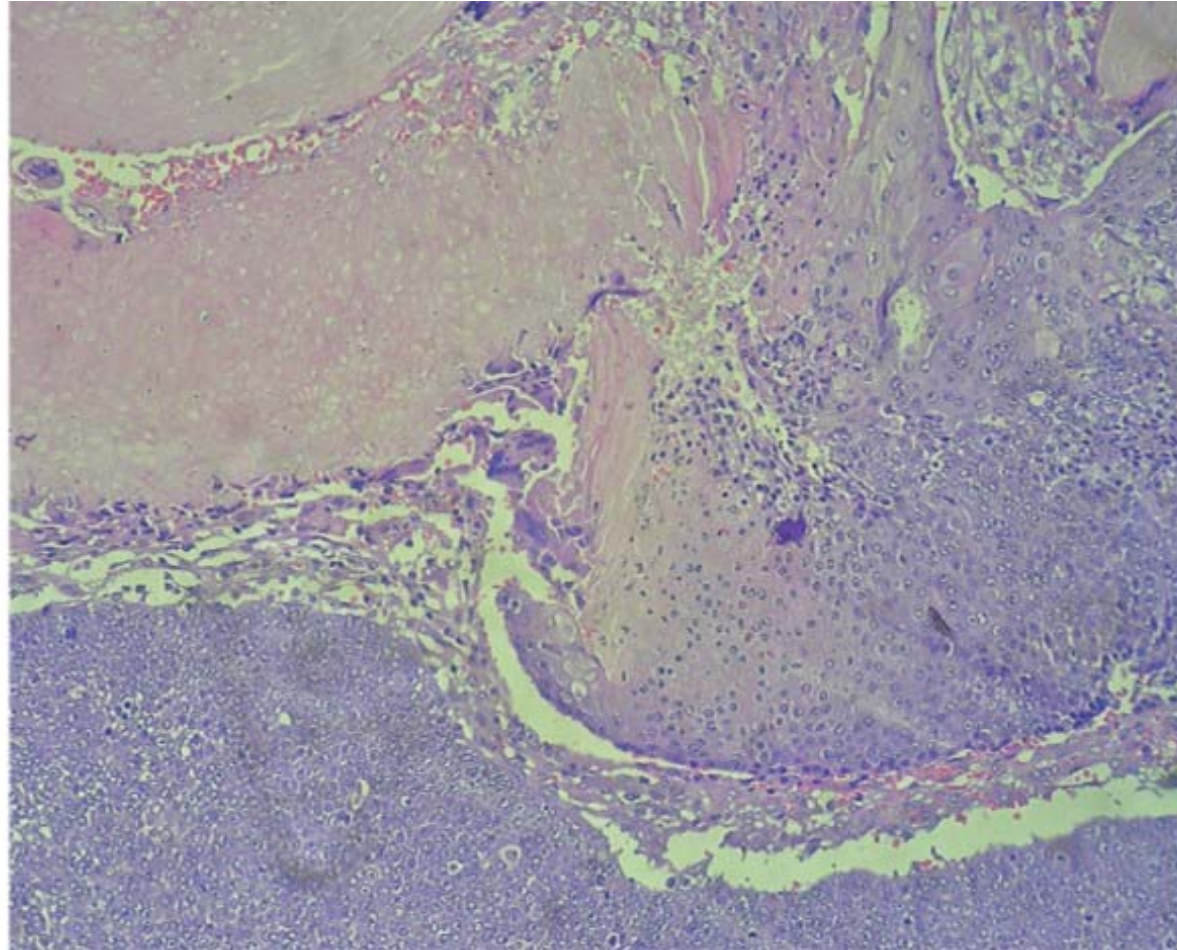
Diagnosis

- Pilomatricoma, left parotid region

Paraffin sections



Paraffin sections



Thank You